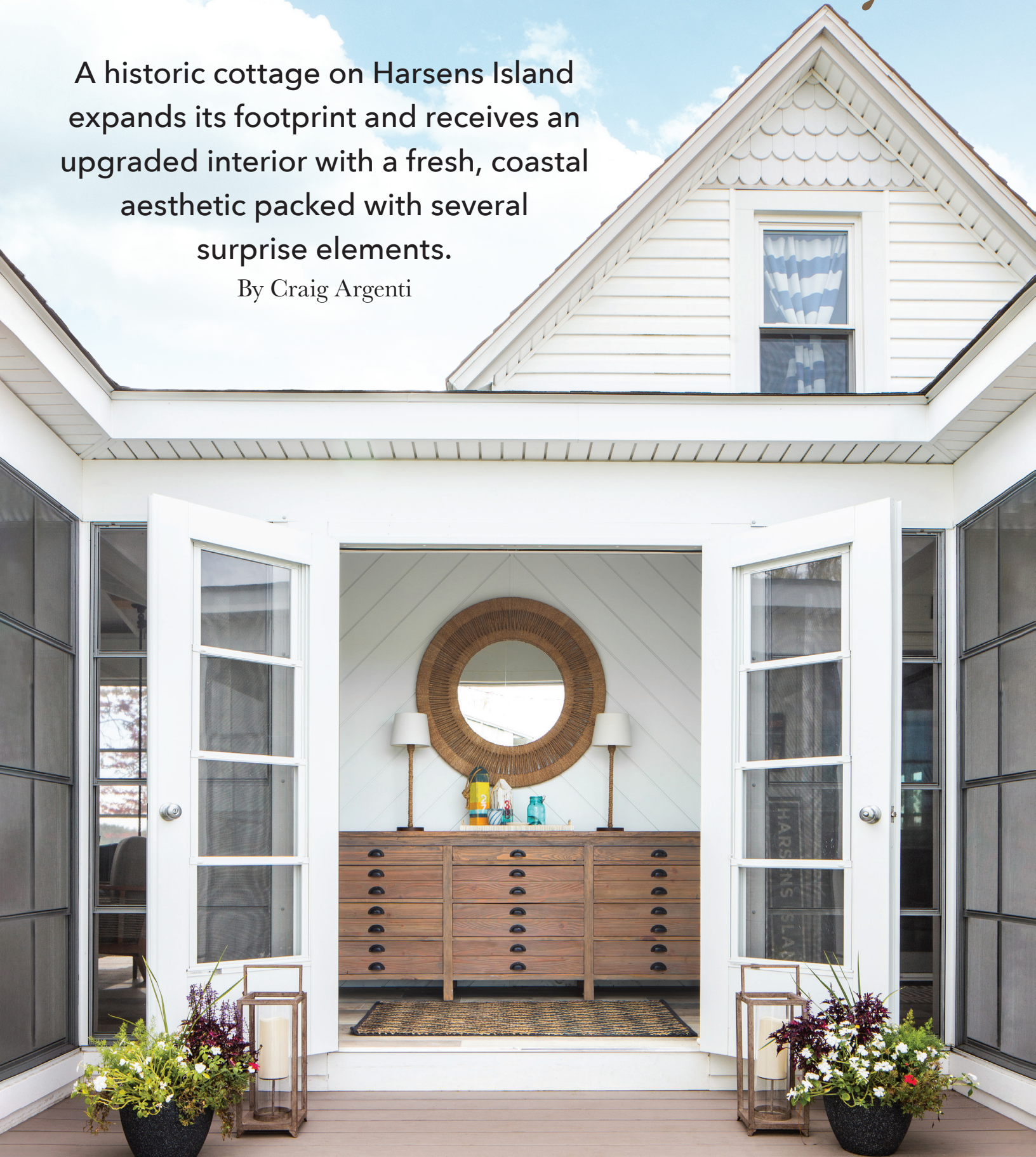


Harsens Hideaway

A historic cottage on Harsens Island expands its footprint and receives an upgraded interior with a fresh, coastal aesthetic packed with several surprise elements.

By Craig Argenti



Interiors: Terry Ellis, Room Service Interior Design. Photos: Diana Paulson

“The cottage was built in 1910 and had a lot of beautiful woodworking throughout but it was quite literally falling in on itself. Instead of knocking it down, we wanted to preserve this piece of history on Harsens Island and elevate what was there.”

Jennifer Bierkle, Homeowner



Learn how Terry Ellis transformed the interior of this timeworn cabin into a fresh, bright, island getaway.



Jennifer Bierkle and her husband are avid boaters and belong to the Grosse Pointe Yacht Club, making this island escape a favorite weekend destination for their family of four. In fact, their trip via boat is a quick 15-minute ride across Lake St. Clair, compared to an hour-plus commute by car that also requires a ferry ride.

This lounge area was one of the new additions to the century-old cottage. The blue stone fireplace is surrounded by shiplap that was painted an even darker shade of blue to reinforce the nautical theme found throughout the cottage. The porch swing complements the casual nature of the space and is often fought over among visiting family and friends.

Teak wood lounge chairs: **CAI Designs**.
Pillow fabrics: **Pindler**.

The new porch addition is Jennifer's favorite part of the renovation. Find out why.



This breakfast nook, which is located off the kitchen, is another part of the new extension. The floor-to-ceiling windows offer charming views of the riverfront property and is the perfect spot to catch a summer sunset over the largest freshwater delta in the world.

Dining chairs: **CAI Designs**.
Chandelier: Available through **CAI Designs** and **Lighting Resource Studio**.





The kitchen was completely remodeled with new plumbing, electrical, cabinetry, appliances, surfaces, and fixtures. Much like other areas on the first floor, a wall was removed to open up the floor plan. Blue cabinetry was intentionally used on the kitchen island and the adjacent bar area to mimic the deep blue channel waters found in the St. Clair River just outside.

Rattan rope pendants: **CAI Designs**.
Tile: Available through **Beaver Tile and Stone**.





Jennifer's husband purchased the cottage with his brothers about 25 years ago, and the property has grown with their family ever since. It has become a popular gathering place for visiting family and friends, and areas like this dining room were designed with entertaining in mind. This large 10-seat table is a great place to play board games after a long day of outdoor water sports.

Turquoise orb chandelier: **CAI Designs.**



Every surface in the existing structure was altered except for the ceiling, which was simply painted white. This kept the integrity of the home's original shape intact while making it much lighter and more inviting. The organic materials were continued into the main living area with a Palecek coffee table that features an inlaid fossilized clam shell on a stonecast base made from a natural tree trunk mold.

Sectional and coffee table: **CAI Designs**.
Pillow fabrics: **Kravet**.

“Every project is a little bit different, and Harsens Island had its own inherent challenges... The first one being the ferry to get over there!”

Terry Ellis, Room Service Interior Design



Terry Ellis explains the logistical challenges the island setting created.



In addition to the abundant natural materials and finishes, Terry incorporated several calming blue and green tones throughout the interior to echo the riverfront setting. These colorful bird portraits, which were hand-painted by Jennifer's sister-in-law, Sarah Lutz, also pay homage to some of the island's bird species.



With only one bathroom in the cottage, it was important for Terry to select finishes that could withstand high-traffic and work for multiple users. Horizontal shiplap carries the home's rustic-chic style into the bathroom.

Sconces: Available through **CAI Designs** and **Lighting Resource Studio**.
Tile: Available through **Beaver Tile and Stone**.

“When people come and visit, the number one compliment I receive is about the beautiful colors. It took some persuading on Terry’s part to convince me to paint the walls white – because I was so nostalgic over the existing dark wood – but I am so happy I followed her guidance! It really needed the white backdrop for the dramatic pops of color to truly shine.”

Jennifer Bierkle, Homeowner



Watch the full video with Jennifer and Terry [here](#)

An aerial photograph of a beach. The top half of the image shows clear, turquoise water with white foam from waves breaking onto the shore. The bottom half shows the golden sand of the beach, with some footprints visible. The overall scene is bright and serene.

Island Life

By Tanya Zager Chisholm and Emily McDonald

Dreaming of running off to your own deserted island or beach? The reality is island life can be a bit messy. These products will assist you in creating a refined space to house all your outdoor necessities, while acting as a stopgap from tracking in the beach itself. So, whether you make your beach transition through a bathroom, cabana, or mudroom, Michigan Design Center has everything you need to create a beautiful space with lasting durability. We even threw in a couple of bonus items to remind you to relax and have fun this summer.



Photo by Beth Singer

This space created by Marianne Jones, showcases *Eastern Promise* by Martyn Lawrence Bullard *Field Majorelle* in Marine/Milk. The aquatic hue and repeating pattern of this concrete tile stirs a wavelike motion and is a sound, easy-to-clean choice for a changing area. **Ann Sacks**

CLEAN & CLEAR

After a fun-filled day by the water, you'll need a place to store all your things. This assortment of cabinetry is both durable and easy to clean.



Devise a custom solution to keep even the messiest of spaces neat and tidy. These examples will supply ample storage for towels, totes, and even sand pails. **California Closets**



Rain or shine, these cabinetry options feature a rich wood finish that won't warp, fade, or crack, and are available in a variety of finishes. *NatureKast*, **E.W. Kitchens** and *Rutt HandCrafted Cabinetry*, **Gardner Builders**

From left to right: *Cobalt Linen*, **E.W. Kitchens**; *Super White*, **E.W. Kitchens**; *Weathered Driftwood*, **E.W. Kitchens**; *Weathered Charcoal*, **E.W. Kitchens**; *Reclaimed Chestnut Natural Stain*, **Gardner Builders**

BEVY OF BEAUTIES

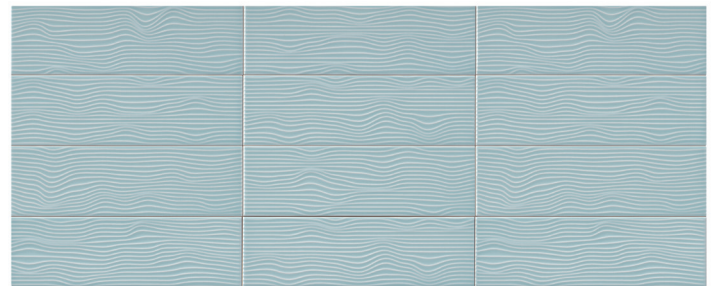
Our showrooms provide an incredible selection of beautiful patterns. Each of these examples are suitable for interior or exterior applications, and are accessible in a potpourri of colors.



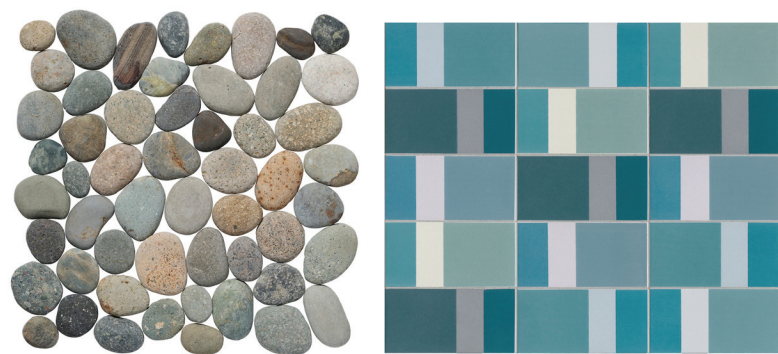
Island Stone Palms glass mosaic tile combines a fluid design with geometric elements that are reminiscent of the organic shape of delicate palm fronds. **Beaver Tile & Stone**



Flash Banana Leaf in Cotton Gloss indoor/outdoor ceramic tile is an excellent choice when you want to draw upon the inspiration of the tropics without the color commitment. **Ann Sacks**



Island Stone Nomad Ebb and Flow Sea Foam Gloss ceramic tile conjures the natural movement of water, creating a soothing backdrop for a wall application. **Beaver Tile & Stone**



ABOVE LEFT | Like a collection of your favorite beach finds, *Island Stone Perfect Pebble* natural stone tile in Java Grey Natural are impeccably smooth and uncommonly versatile.

Beaver Tile & Stone

ABOVE RIGHT | *Diarama Field Series* in Skylight porcelain tile mixes matte and gloss glazes, reflecting the varied tones of the sea. **Ann Sacks**



Kronos Ceramiche Ske 2.0 Outdoor Wood Side Oak pictured here in a large-format gres porcelain tile, has an authentic wood finish that's a dead ringer for the real thing. Also available in Wood Side Nut. **Cercan Tile**

POSH ACCENTS

Every space should have something special that imbues it with character and life. These pillows embody an island spirit and allow you to personalize your environment.

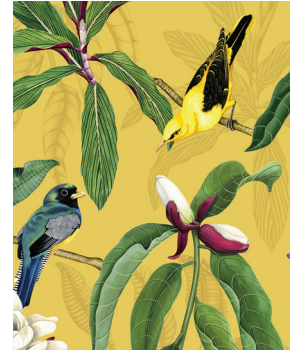
These *Bernhardt Exteriors Accent Pillows* evoke the ethereal essence of billowy clouds and towering sand dunes. **CAI Designs**



This trio of sea-glass-toned *Kravet Soleil* collection indoor/outdoor pillows (pictured left to right) *Inside Out Geo* in Green, *Velvet Lumbar* in Teal, and the *Vista Boucle* in Ink are made to withstand anything the elements throw at them. **Kravet/Lee Jofa/Brunschwig & Fils**

HEAVY HITTERS

These vibrant textiles may be used for cushions, pillows, or even privacy curtains for your island retreat. Each fabric is water-resistant, and UV treated to prevent fading.



Osborne & Little *Empyrea Michelia* outdoor fabric is offered in three colorways, and illustrates exotic birds perched on magnolia tree branches with white blossoms. **Rozmallin**



Jim Thompson *Cancun* in Lime and *El Bagre* in Sand are inspired by the colors, nature, and crafts of Mexico. **Tennant & Associates**



Pollack *Amaya Mother of Pearl* and *Amaya Surf* indoor/outdoor Sunbrella high-performance fabric has a stain-resistant finish and may be cleaned with bleach. **Tennant & Associates**

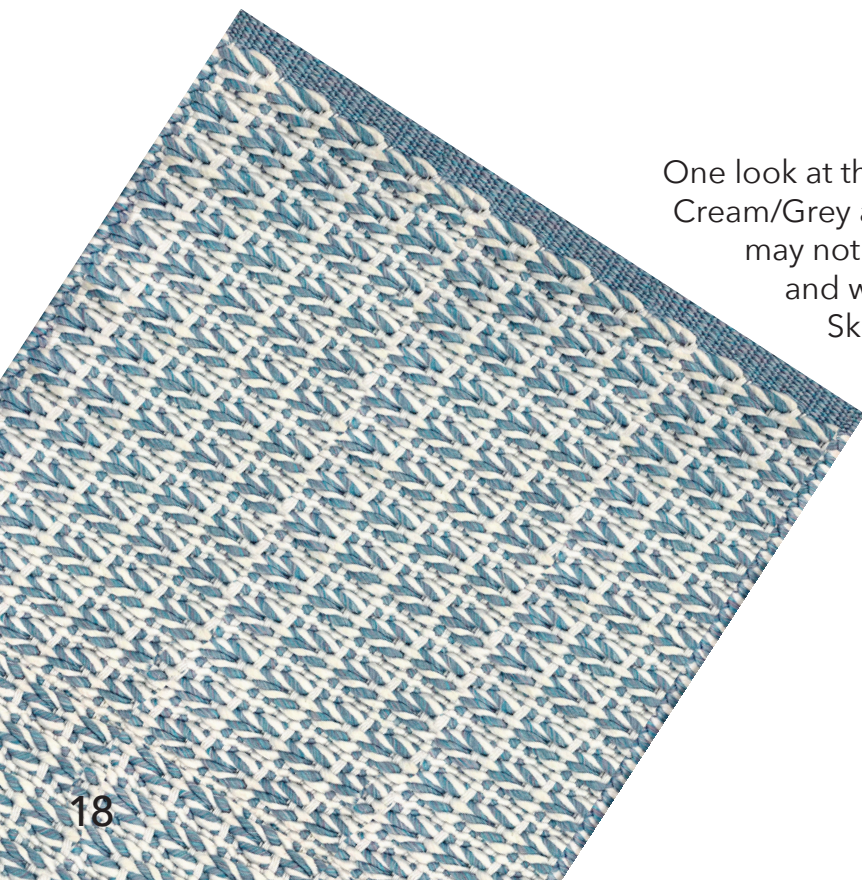
SAND TRAP

The first line of defense in keeping your home as sand-free as possible is a textured all-weather rug.



The *Dash & Albert Folly* indoor/outdoor rug in Blue/Green (right) has an easy-going vacation attitude with its beach blanket stripes, while the *Veranda* in Natural (above) washes clean with a quick hose down.

Chatham House Lifestyle Gallery



One look at the luxuriously soft *Sunbrella* by *Harounian Rugs* Cream/Grey and Cream/Blue outdoor rugs (below) and you may not believe that they can withstand stains or spills, and won't pill or fade. The *Harcourt Collection Aqua Sky* Snow White rug (left) has a sturdy weave that is ready for action. **The Ghiordes Knot**



SCENE IN A NEW LIGHT

Layers of light set the scene – even outdoors. Below is an array of outdoor solutions which offers a range of illumination to encourage more time outside, right into the wee hours of the night.



The *Savoy House Colonade 6-Light Fan D'Lier* in Provence with gold accents has a secret...a cleverly concealed ceiling fan nestled within. Now that's cool.

CAI Designs and Lighting Resource Studio



The *Hubbardton Forge Halo Large* and *Fairwinds Outdoor Sconces* are constructed to resist harsh environmental conditions and combat oxidation to ensure durability for the life of your fixture.

CAI Designs and Lighting Resource Studio



Each of these *Visual Comfort* fixtures are a modern take on classic design. From left to right: *Eastham Large Wall Lantern* in Textured Black, *Gracie Single Sconce* in Polished Nickel, *Marine Wall Light* in Chrome, each by Chapman & Myers, and the *Ollie Small Wall Lantern* in Bronze by Ralph Lauren. **City Lights Detroit**

FOOTLOOSE AND FANCY WHEEL!

These furnishings may be used selectively in a mudroom or cabana, but most of all, we hope they will inspire you to unwind and enjoy the island life.



With their appealing nautical hues, the *Uultis Scalene Outdoor Sofa and Chair* pair up for easy conversation.
Designer Group Collection

A sip of wine and a relaxing ride on the *Uultis Gig Outdoor Hanging Chair* at sunset sounds like the perfect way to end the day.
Designer Group Collection



Ideal for small spaces, the *McGuire Outdoor Lounge Chair and Ottoman* by Thomas Pheasant is a lovely and functional piece for a changing area.
Baker Furniture



The *Couture Jardin LOOP Sofa*, *Highback Armchair*, and *Coffee/Corner table* is a stylish grouping beneath the *Kannoa Wave Cabana*.
The Gallery of Luxury

The *Couture Jardin CURL Double Daybed* (with or without canopy) is a fitting spot for a refreshing nap.
The Gallery of Luxury

