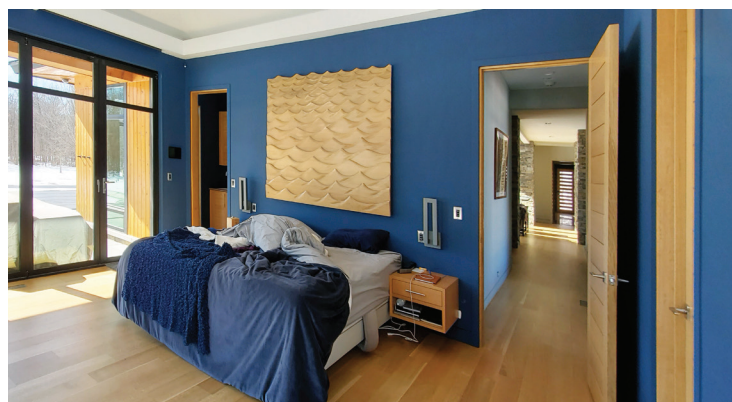




Layering was key to adding warmth and personality in the primary bedroom. The tray ceiling was covered in a nubby grasscloth, adding texture on a larger scale along with the headboard's basket-weave pattern. The area rug was also very important in grounding the space. The custom euro pillows in blue-green fabric and the faux fur add yet another natural texture that was not previously used before. Paying homage to the home's wooded lot, the *Hubbardton Forge* pendants that hang over each of the nightstands were chosen for their abstract resemblance of leaves falling.

Ceiling wallcovering and pillow fabric: **Tennant & Associates**.
 Pendants: **CAI Designs** and **Lighting Resource Studio**.



BEFORE