

MICHIGAN DESIGN CENTER  
@Home



BOLD ART | ISLAND LIVING | WOODDED WONDER

MICHIGAN DESIGN CENTER  
**@home contents**



**3 LOWER-LEVEL LUXE**

Cheryl Nastro of Tutto Interiors upgrades her lower-level walkout into the ultimate entertaining space.

**15 DOING THE HONORS**

Guests and hosts alike are certain to have a memorable time with these pieces built for entertaining.

Photo by Carlson Productions

**20 ART & SOUL**

Lucy Earl and Whitney Elkins of Jones-Keena & Co. show off a new home packed with personality.

**30 CHARACTER ACTS**

These conversation-starters are sure to become instant classics.

Photo by Beth Singer



**40 HARSENS HIDEAWAY**

Terry Ellis of Room Service Interior Design transforms a historic cottage on Harsens Island into a fresh, bright, island getaway.

**51 ISLAND LIVING**

Relax, have fun, and rest-assured with these seasonal game-changers with lasting durability.

Photo by Diana Paulson

**60 WARMTH IN THE WOODS**

Concetti Studio takes an award-winning contemporary estate to the next level by creating intimate spaces that match the homeowners' personality and lifestyle.

**71 ORGANIC AMBIANCE**

Taking their cues from nature, these biophilic designs are must-haves in your bedroom, bathroom, and living spaces.

Photo by Brett Mountain



# Lower-Level Luxe

Avid entertainers Cheryl and Tony Nastro transform their lower-level walkout into a multi-functional recreational retreat.

By Craig Argenti

*Interiors: Cheryl Nastro, Tutto Interiors*

*Photos: Carlson Productions*



While their existing main floor offers an intimate gathering space for family and friends, the Nastro's wished to add an open, casual area to accommodate an even larger number of guests in their lower level. Sofas and side tables: available at **CAI Designs**.

“We’ve had many parties since completing the space, and several visitors have commented that the space is so comfortable they could fall asleep! That’s the ultimate compliment to me as a designer.”

*Cheryl Nestro, Tutto Interiors*



Learn how Cheryl created different zones for guests to gather that are both stylish and comfortable.



Interior designer Cheryl Nastro of *Tutto Interiors* is no stranger to designing classic and timeless spaces for her clients, but when it came to her own home she admits, “It’s a different kind of emotion.” Cheryl and her husband have lived in their waterfront Northville home for over a decade and debated moving before ultimately deciding to stay and renovate.

Barstools: available at **CAI Designs**.

Pendants: available at **CAI Designs** and **Lighting Resource Studio**.



Barstools: available  
at **CAI Designs**.  
Pendants: available  
at **CAI Designs** and  
**Lighting Resource  
Studio**.



“There were some tricky situations we had to overcome when designing the space,” says Cheryl. In the kitchen/bar area, the ceiling is intentionally shorter to conceal the home’s ductwork. This lower ceiling is why Cheryl opted for a one-level, 36-inch-tall island instead of a typical 42-inch bar height one. This shorter height is also why she chose to install the sink in the island as opposed to the back wall. “Even though it looks like a bar, it has the features of a full kitchen,” says Nestro. There is a pantry, a wine fridge, and an induction stove that is often used to bake pizzas. “I come from a family of chefs, so it was an absolute must for me to have a space with comfortable seating for dining where I could interact with my guests while preparing a meal.”



“There is a lot of meaning to the photos on the wall,” explains Cheryl. Several images display food from her mother’s cherished dishes, while one photo in particular pays tribute to their late family dog “Rocky,” who rightfully earned a place on the food wall as he was often found at guests’ feet begging for table scraps.



From the moment guests walk down the stairs, eyes are immediately drawn to the dramatic navy-blue back wall and custom metal wall artwork that Cheryl had commissioned by Patra Studios in Royal Oak. The metal art started out as a prototype of three small 1-inch strips of paper that Cheryl fine-tuned with the artist before ultimately created the large installation made of a copper material with a live finish that will patina over time.

Custom banquette: available at **CAI Designs**.







The large banquette and dining table can comfortably seat 10 guests, but have accommodated as many as 14 people. “Lots of fun and great conversions have happened here,” says Cheryl. In addition to its dining capabilities, the large 120-inch table is a great place to play cards, have a drink, or simply sing along to music that plays through the state-of-the-art sound system.

Custom banquette: available at **CAI Designs**.  
Pillow fabric and wallcovering: **Tennant & Associates**.



The centralized common area was intentionally left open. “I contemplated placing the pool table here but decided to place it out of the way and keep this space open for dancing,” says Cheryl. When they do host the entire family for holidays, additional tables and chairs are temporarily used in this space to seat even more guests. The custom server along the wall stores additional serveware and acts as an additional serving surface in a transitional space between the indoors and outside when weather permits.



Cheryl designed the living area to be comfortable and cozy, and it has quickly emerged as the couple's favorite spot in the home. An area rug was used to identify the space, and everything is intentionally tight together to create intimacy. One of the lower-level's most unique features is the vertical wooden louvres that act as a dividing wall to help obscure the hidden workout equipment and pool table.

Sofas, swivel chairs and side tables: available at **CAI Designs**.  
Pillow and stool fabric: **Tennant & Associates**.



“I wanted this media piece to look like a piece of furniture rather than something that just houses the television,” says Cheryl. “The walnut finish camouflages the TV, and I used indirect lighting with some offset niches to display some décor items that we have collected over the years.” The unit also stores some stools that can be used along with the yin-and-yang coffee table for different configurations when entertaining.

Coffee table and ottomans: available at **CAI Designs**.





The lower-level's comfortable full bathroom is located adjacent to the kitchen. A vanity with a trough sink was installed along a textured linen wallcovering, and the shower contains a dark bronze porcelain tile for a touch of sophistication. The honed porcelain floor tile is even equipped with underfloor heating to combat the cold Michigan winters.

Vanity: **Scavolini Store Detroit.**

Mirror and sconces: available at **CAI Designs** and **Lighting Resource Studio.**

Floor tile: **Cercan Tile.**

“I often ask my clients — How are you going to live here on a daily basis? When designing a multipurpose space that will be used for entertaining, you’ll want to choose a layout and furnishings that also fit your family’s everyday needs and that’s what we’ve done here.”

*Cheryl Nastro, Tutto Interiors*



---

Watch the full video with Cheryl [here](#)

---

Architectural videography footage: WayUp Media

# Doing the Honors

By Tanya Zager Chisholm

Entertaining includes so much more than gourmet food and drinks. You want to create an environment where friends and loved ones feel relaxed and at home. We've collected an array of welcoming décor, dazzling dishware, and even a comfortable chair for your favorite uncle's post-dinner nap. Enjoy!



Beautiful inside and out, the chic Georgica bar by Mabley Handler has ample storage for a personal pub. Kravet/Lee Jofa/Brunschwig & Fils

## GATHER ROUND

A banquette bench is terrific for close connection or even wrangling squirmy children at mealtime, while single chairs are ideal for grandma and grandpa who may need firm seating and easy access. A long, handsome table seats a crowd, and an ample credenza holds all the necessary tabletop accoutrements. Decorative lighting, pillows, art, and accessories set the scene.



1.



2.



3.



4.



5.

1. Hickory Chair Bistro long banquette with Mariette Himes Gomez upholstery collection, **CAI Designs**

2. Hickory Chair Loretta side chair, **CAI Designs**

3. Costantini Pietro Time dining table, **Designer Group Collection**

4. Moss Home Stereo Pillow, **Fifi & Coco Interiors**

5. John-Richard Meta credenza, **CAI Designs, Designer Group Collection, Lighting Resource Studio**





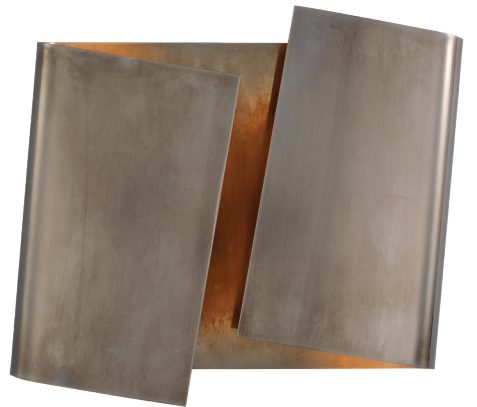
6.



7.



8.



9.



10.

6. L'Objet Alchimie black dinnerware; Soie Tressée black dinnerware; Oro glassware; Linen Sateen napkins in Tiger + Light Blue, Kelly Behun Leaf bowl, Han Spice Jewles, **Hestée Bleu Intérieurs**
7. John-Richard Serenity artwork by Carol Benson-Cobb, **CAI Designs, Designer Group Collection, Lighting Resource Studio**

8. Visual Comfort Piel Right Wrapped sconce by Kelly Wearstler, **City Lights Detroit**
9. Visual Comfort Piel Right Twisted sconce by Kelly Wearstler, **City Lights Detroit**
10. John-Richard Ocean Blue handblown glass vase I, II, III, **CAI Designs, Designer Group Collection, Lighting Resource Studio**

## RAISING THE BAR

Whether you're having an intimate cocktail party or a big family fete, we have just the right bar to fit your space. Mood lighting includes a discreet tabletop lantern and a wall sconce that makes a statement. Elegant barstools and tables both tall and diminutive round out these bar essentials, leaving the best for last, a gorgeous crystal cocktail set. Cheers!



1. Elegante bar cabinet by Laura Kirar, **Baker | McGuire**
2. Visual Comfort Liaison Statement sconce in antique-burnished brass with crackle glass by Kelly Wearstler, **City Lights Detroit**
3. Elite Modern Senna bar stool, **Designer Group Collection**
4. Saint-Louis Crystal Folia black wood satin-finished crystal portable lamp, **Hestée Bleu Intérieurs**
5. John-Richard Brass and Marble Martini side table, **CAI Designs, Designer Group Collection, Lighting Resource Studio**
6. Georgica Bar by Mabley Handler, **Kravet/ Lee Jofa/Brunschwig & Fils**
7. BoConcept Torino bar table, **Hestée Bleu Intérieurs**
8. Saint-Louis Crystal Manhattan Coffret Home Speakeasy set, **Hestée Bleu Intérieurs**

## SIT BACK & RELAX

With dinner and drinks complete, it's time to take it easy and unwind. We have comfy seating, soft lighting, warm accessories, and a cozy throw blanket to take a little snooze. Or challenge someone to a game of chess on this smart side table. Guests and hosts alike are certain to have a memorable time.



1. Bubble chair by Barbara Barry, **Baker | McGuire**
2. Verellen Jackson sofa, **Chatham House Lifestyle Gallery**
3. Moss Studio Soho pillow, **Fifi & Coco Interiors**
4. Wool blend mohair-trimmed throw with rabbit fur pom poms, **Ruth Casper Design Studio**
5. Verellen Elliot ottoman, **Chatham House Lifestyle Gallery**
6. Bramble Urban side chess table, **Decoroom**
7. Gemstone small table lamp by Barbara Barry, **Baker | McGuire**
8. Feizy Hamden rug by Thom Filicia, **The Ghiordes Knot**

# Art and Soul

A striking collection of original art and bold, patterned rugs bring an energetic, modern aesthetic to a new home in Birmingham.

By Susan Todebush

*Interiors: Lucy Earl and Whitney Elkins, Jones-Keena & Co. Photos: Beth Singer*



The homeowners' modern art collection provides a colorful focal point in the den while a bold plaid rug from **The Ghiordes Knot** offers softness underfoot. Sofa and chairs: **CAI Designs**, with fabric from **Tennant & Associates**. Side tables: **CAI Designs**.

“The soul of a house is the rugs, the art, and the antiques. Without all three of those, the house has no soul.”

*Lucy Earl, Jones-Keena & Co.*



Learn how Whitney Elkins (left) and Lucy Earl (right) approached the transformation of this builder spec house into the personalized home it is today.



An original triptych by artist Hunt Slonem is a core piece in the homeowners' carefully-curated art collection. It holds a place of honor in the family room, and it inspired the color palette for the entire home.

Thayer Coggin sectional and chairs: **CAI Designs**.  
Pillow fabrics: **Kravet** and **Tennant & Associates**.

---

This is Lucy's favorite room. Find out why.

---



Dark walls and comfortable seating are two of the ingredients for a dining room that invites guests to linger over a good conversation.

Hair-on-hide rug: **Kravet**. Dining table and chairs: **Baker | McGuire**. Table sculpture: **CAI Designs**. Hall sconces: **Lighting Resource Studio**.





Lucy Earl and Whitney Elkins of *Jones-Keena & Co.* in Birmingham created a custom area rug with Kravet faux leather trim to anchor the kitchen's dining area. The builder tapped *Stalburg Design* of Beverly Hills to create the home's kitchen design.

Chandelier: **Lighting Resource Studio.**  
Pendants: **City Lights Detroit.**

---

"Art, antiques, and rugs are the soul of the house."

---







The home, which was a builder's spec house, already had richly-layered millwork, creating the ideal backdrop for the homeowners' bold, modern art collection. In the office, two bold red chairs from Baker Furniture (with fabric from Schumacher) echo colors found in the art.

Desk: **Baker | McGuire**. Light fixture: **Lighting Resource Studio**.



The primary bedroom is an oasis of calm with its soothing charcoal and cream color story.

Bed: **Baker | McGuire**. Chairs and bench: **CAI Designs**.  
Pendant and sconces: **Lighting Resource Studio**.  
Silver pillow fabric: **Schumacher**.

---

Lighting is an important part of any home. Learn how Whitney and Lucy approached their lighting choices for this project.

---





The striped Missoni rug in the adjoining entertaining space set the tone for the entire lower level. At the bar, bright orange stools add a lively touch.

Bar stools: **CAI Designs**. Pendant lighting: **Lighting Resource Studio**.  
Ice bucket: **Decoroom**.



Bright colors and bold patterns energize the lower level entertaining area.

Chairs: **Baker | McGuire**. Pillow fabric: **Kravet**.



*Newsworthy* wallcovering, by Weitzner Limited, is hand-woven with 70% post-consumer recycled newspaper, creating a colorfully-textured wall treatment in the small bathroom.

Wallcovering: **Tennant & Associates.**  
Sconce: **City Lights Detroit.**



Many of the fixtures used throughout the home feature interesting materials and finishes. In the powder room, rock crystal wall sconces and the ebonized steel finish on the *Regina Andrew* mirror soften the modern aspect of the home.

Mirror: **Lighting Resource Studio & Decoroom.**  
Wallcovering: **Tennant & Associates.**

---

See the full interview with Whitney and Lucy here

---

# Character Acts

No home is complete without them - those unique pieces that add soul to a room and spark conversation with visiting guests. Whether it is a distinct piece of art, a bold rug, a storied antique, or a stand-out mirror, these one-of-a-kind finds from our showrooms are sure to add character to any room.

By Craig Argenti & Emily McDonald



Constructed of woven lampakanay, the imperfectly-oval *Hoku Mirror* from the *NICOLEHOLLIS Collection* for McGuire is a modern piece with Hawaiian soul.

**Baker | McGuire**

## STRIKING ARTWORK

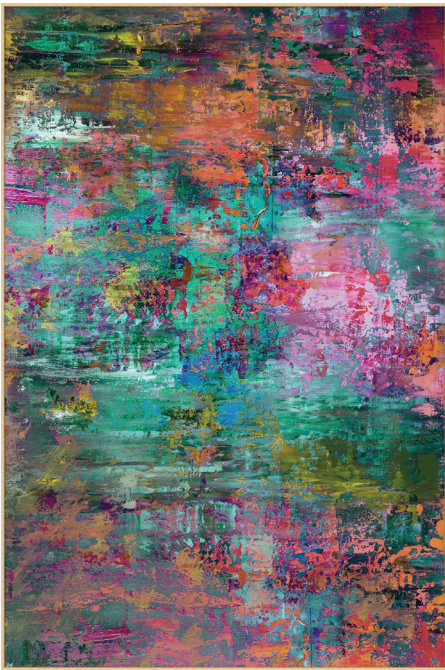
The eye-catching compositions in this assortment of abstract art is bound to evoke an emotional response while adding depth and movement to any space.



Artist Kader Boly grew up in the plains of West Africa and creates remarkable works inspired by his upbringing as a nomadic herder. Kader's deep connection to the animal kingdom is prevalent in many of his creations, with several pieces featuring animalistic motifs. View several large pieces of his original artwork on display at **CAI Designs**.



The geometric patterns in this colorful pair of Art Deco paintings by Charlotte Morgan, an artist with *Trowbridge Gallery*, adds vibrant energy. **City Lights Detroit**



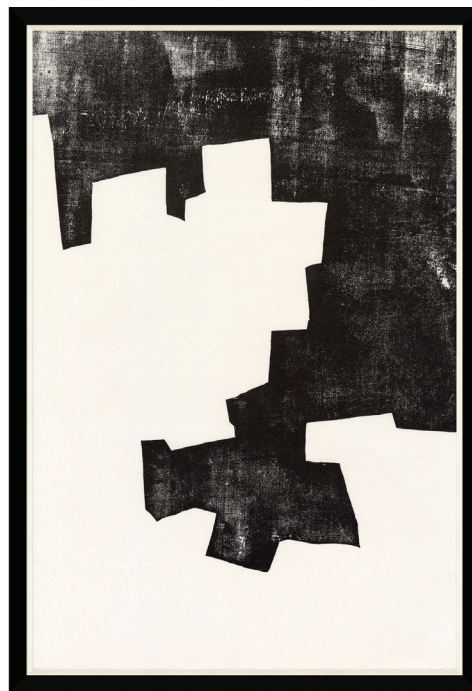
The tropical tones in *Waterfall*, a large abstract painting from *Wendover Art Group*, is the perfect complementary piece to coordinate with a colorful abstract area rug.  
**CAI Designs**



*Polymath*, a bold abstract piece by artist Sarah Stockstill, complements modern home décor exceptionally well.  
**The Designer Group Collection**



*Placidus* is an encaustic (hot wax) painting by local artist Matthew MacDougall. Matthew paints in layers, fusing each one with heat and using a variety of tools. As a medium, encaustic paintings date back about 2,000 years and since beeswax is impervious to moisture, it will not yellow or darken over time. **Chatham House Lifestyle Gallery**



Whether hung side by side or displayed across the room, this set of two black-and-white abstract pieces from *Soicher-Marin* provides balance. **Baker | McGuire**



## DARING RUGS

Area rugs can provide the inspiration for the décor of an entire room for good reason! Aside from grounding a space, complementary colors can be pulled from them to coordinate with other items in the room for a unified look. They're also a great way to make a bold statement, as seen with these distinctive rugs.



*Wanderhand* is a hand-knotted Tibetan rug from *Tamarian* and is inspired by a graffiti mural on the Berlin Wall in an area known as the East Side Gallery. Visitors come and trace their hand and mark the date, making it an ever-changing mural. The Ghiordes Knot and Tamarian recently created a version of this rug for a designer by using the tracings of their client's family members' hands and incorporated them into the finished design - a true testament to the customization available through MDC showrooms!

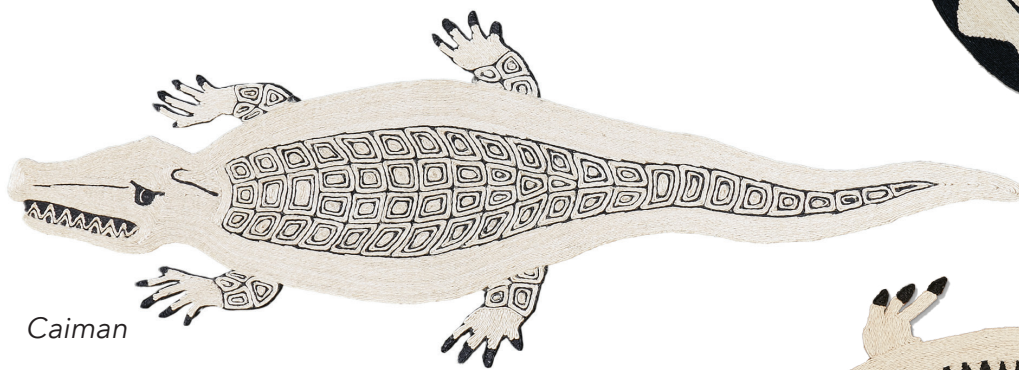
**The Ghiordes Knot**



This hand-knotted vintage Bidjar rug from *Hickory Oriental Rugs* is full of color, pattern, and texture. **CAI Designs**



*Espiral*



*Caiman*



*Cocodrilo*

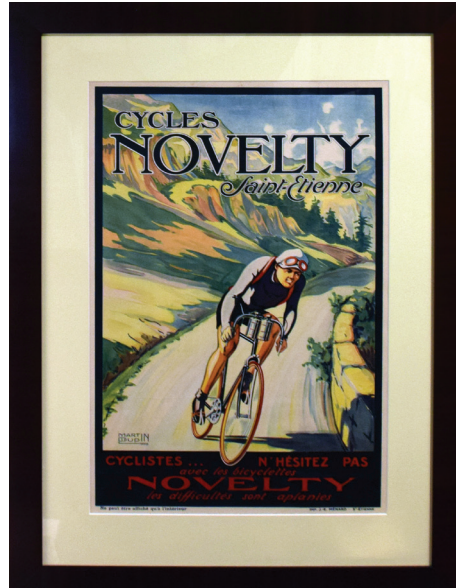


*Serpiente*

Schumacher and Patterson Flynn just launched an enchanting collection with Charlap Hyman & Herrero featuring a grouping of hand-coiled abaca rugs with whimsical, animal-inspired designs. **Schumacher**

## VINTAGE COLLECTIBLES AND ANTIQUES

When it comes to conversation pieces, there's nothing quite like vintage and antique furnishings. They are truly one-of-a-kind items that undoubtedly have a storied past, from the craftsmanship of the artisans who made them to the era in which they were created.



Designer Terry Ellis, principal at Room Service Interior Design, has collected several vintage posters from her travels abroad. *Meubles Decoration* (top left) and *Cycling* (top center) are French Art Deco posters from the early 20th Century. *Fyn* (top right) has a mid-century nature with modern graphic art and is named after a small Danish town. *Furniture Store* (bottom) depicts a slice of life in the early 1960s showing shoppers dressed up to go to the best store in town. **Room Service Interior Design**



These architectural remnants were salvaged from historic buildings and are packed with history. This artifact (left) was salvaged from a historic structure in southern India and is more than 100 years old. *Plaster Frieze* (right) is an architectural fragment from the exterior of the Old Main Building at Wayne State University where Terry Ellis attended many classes while studying interior design. **Decoroom** (left) and **Room Service Interior Design** (right)



Designer Phyllis Whitehead's Galerie at MDC is filled to the brim with unique furnishings, art, and accessories. This *Antique Victorian Entry Table* from the late 1800's features a white marble top and a carved wood stretcher with finial detail on original casters. The vintage items on top include a framed *Origami Kimono Art* piece and a pair of *Gilded Lamps* featuring female figures facing each other with custom black silk shades with gold lining. **Fifi & Coco Galerie & Showroom**

## STAND-OUT MIRRORS

Unlike other forms of wall art, these tried-and-true furnishings are not only useful for providing reflection, they also make a space feel more open and amplify light. Form meets function with these stylish mirrors.



The *Pixie Floor Mirror* (left) is a modern take on the classic dressing mirror and the *Hoku Mirror* (middle) is a daring, yet refined piece. The geometric forms in the *Chloe Mirror* (right) were inspired by the multifaceted nature of a diamond. **Baker | McGuire**



This oversized vintage mirror with a hand-carved ebonized wood frame creates a dramatic focal point the moment it is hung. **Rita O'Brien Interiors**



The *Venetian Mirror* from *Ralph Lauren* has stepped corners and multifaceted beveled edges for a clean, elegant look. **CAI Designs**



*Verellen's* one-of-a-kind 17th century *Wine Screw Mirror* adds a unique element to any space. Available in square and rectangle sizes, it can also be coordinated with matching wine screw lamps. **Chatham House Lifestyle Gallery**

## Keep the conversation going!

This grouping of fabrics and wallcoverings is just a sampling of the many inspired collections available through MDC showrooms that are conversation-starters in their own right.



*Bunny Wall*



Bring renowned artist Hunt Slonem's neo-expressionist artwork to your walls with his nuanced wallpaper collection for *Lee Jofa Modern*. Several of the striking prints and stunning color combinations feature his iconic paintings of bunnies and butterflies. **Kravet**

*Ascension*



*Pindler's Exclusive Hearst Castle™ Collection* draws its inspiration from the famous estate nestled in the San Simeon hills above the California coast. Pindler first launched the collection more than 20 years ago and has been adding new timeless and elegant designs of wool and linen embroideries, plush velvets, and printed linens ever since.  
**Pindler**

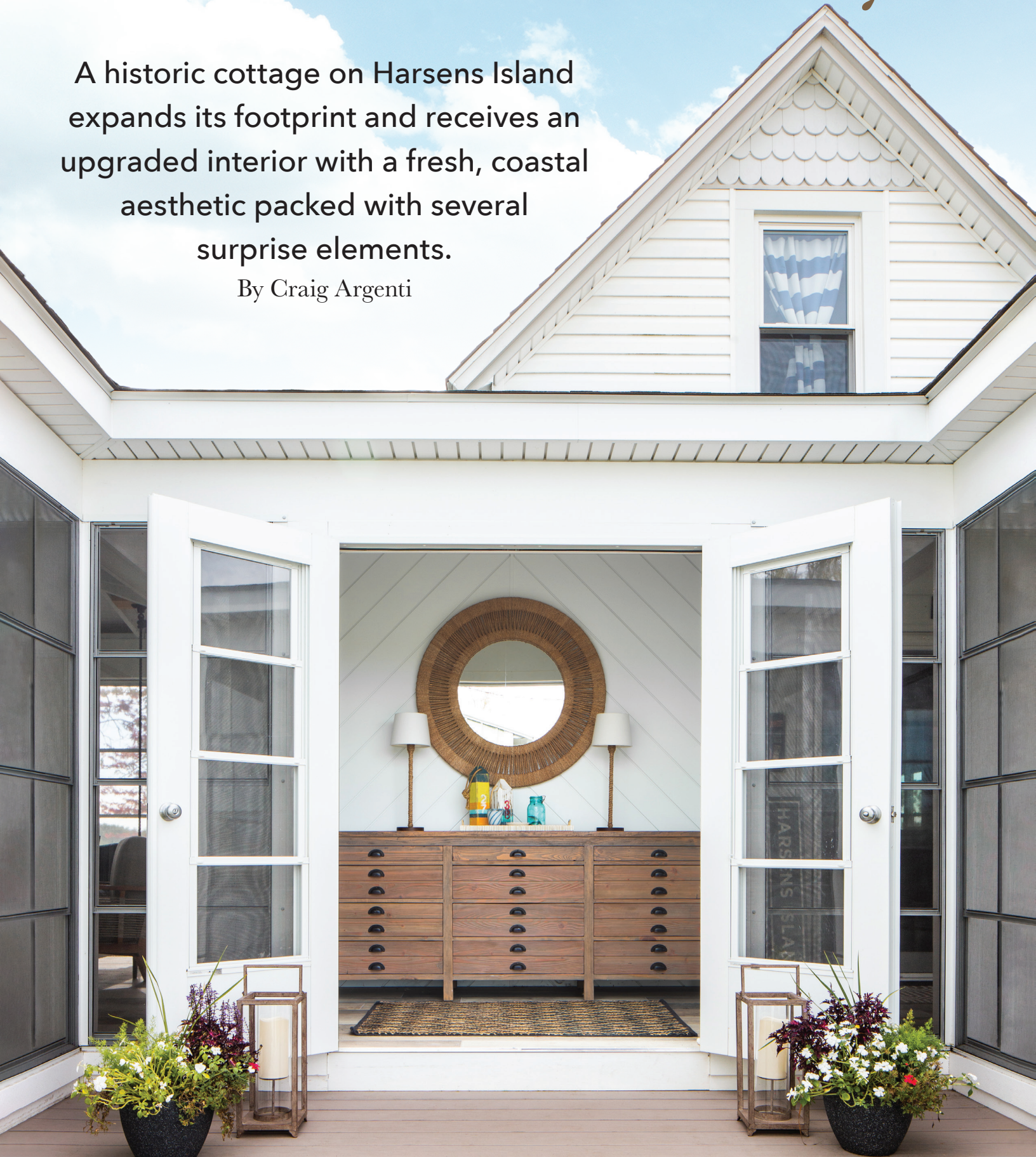


While the fabrics in S. Harris' *Design En Rogue* collection do not fit the typical narrative of most textile collections, they are just as storied and deserving of an audience. When creating this new series, S. Harris Chief Brand Officer Jodi Finer collaborated with creatives across all disciplines and cultures to pay homage to both historical and modern-day influences.  
**Designer Furniture Services + Fabrics**

# Harsens Hideaway

A historic cottage on Harsens Island expands its footprint and receives an upgraded interior with a fresh, coastal aesthetic packed with several surprise elements.

By Craig Argenti





“The cottage was built in 1910 and had a lot of beautiful woodworking throughout but it was quite literally falling in on itself. Instead of knocking it down, we wanted to preserve this piece of history on Harsens Island and elevate what was there.”

*Jennifer Bierkle, Homeowner*



Learn how Terry Ellis transformed the interior of this timeworn cabin into a fresh, bright, island getaway.



Jennifer Bierkle and her husband are avid boaters and belong to the Grosse Pointe Yacht Club, making this island escape a favorite weekend destination for their family of four. In fact, their trip via boat is a quick 15-minute ride across Lake St. Clair, compared to an hour-plus commute by car that also requires a ferry ride.

This lounge area was one of the new additions to the century-old cottage. The blue stone fireplace is surrounded by shiplap that was painted an even darker shade of blue to reinforce the nautical theme found throughout the cottage. The porch swing complements the casual nature of the space and is often fought over among visiting family and friends.

Teak wood lounge chairs: **CAI Designs**.  
Pillow fabrics: **Pindler**.

---

The new porch addition is Jennifer's favorite part of the renovation. Find out why.

---



This breakfast nook, which is located off the kitchen, is another part of the new extension. The floor-to-ceiling windows offer charming views of the riverfront property and is the perfect spot to catch a summer sunset over the largest freshwater delta in the world.

Dining chairs: **CAI Designs**.  
Chandelier: available through **CAI Designs** and **Lighting Resource Studio**.





The kitchen was completely remodeled with new plumbing, electrical, cabinetry, appliances, surfaces, and fixtures. Much like other areas on the first floor, a wall was removed to open up the floor plan. Blue cabinetry was intentionally used on the kitchen island and the adjacent bar area to mimic the deep blue channel waters found in the St. Clair River just outside.

Rattan rope pendants: **CAI Designs**.  
Tile: available through **Beaver Tile & Stone**.





Jennifer's husband purchased the cottage with his brothers about 25 years ago, and the property has grown with their family ever since. It has become a popular gathering place for visiting family and friends, and areas like this dining room were designed with entertaining in mind. This large 10-seat table is a great place to play board games after a long day of outdoor water sports.

Turquoise orb chandelier: **CAI Designs.**



Every surface in the existing structure was altered except for the ceiling, which was simply painted white. This kept the integrity of the home's original shape intact while making it much lighter and more inviting. The organic materials were continued into the main living area with a Palecek coffee table that features an inlaid fossilized clam shell on a stonecast base made from a natural tree trunk mold.

Sectional and coffee table: **CAI Designs**.  
Pillow fabrics: **Kravet**.

“Every project is a little bit different, and Harsens Island had its own inherent challenges... The first one being the ferry to get over there!”

*Terry Ellis, Room Service Interior Design*



Terry Ellis explains the logistical challenges the island setting created.



In addition to the abundant natural materials and finishes, Terry incorporated several calming blue and green tones throughout the interior to echo the riverfront setting. These colorful bird portraits, which were hand-painted by Jennifer's sister-in-law, Sarah Lutz, also pay homage to some of the island's bird species.





With only one bathroom in the cottage, it was important for Terry to select finishes that could withstand high-traffic and work for multiple users. Horizontal shiplap carries the home's rustic-chic style into the bathroom.

Sconces: Available through **CAI Designs** and **Lighting Resource Studio**.  
Tile: Available through **Beaver Tile & Stone**.

“When people come and visit, the number one compliment I receive is about the beautiful colors. It took some persuading on Terry’s part to convince me to paint the walls white – because I was so nostalgic over the existing dark wood – but I am so happy I followed her guidance! It really needed the white backdrop for the dramatic pops of color to truly shine.”

*Jennifer Bierkle, Homeowner*



---

Watch the full video with Jennifer and Terry [here](#)

---



# Island Life

By Tanya Zager Chisholm and Emily McDonald

Dreaming of running off to your own deserted island or beach? The reality is island life can be a bit messy. These products will assist you in creating a refined space to house all your outdoor necessities, while acting as a stopgap from tracking in the beach itself. So, whether you make your beach transition through a bathroom, cabana, or mudroom, Michigan Design Center has everything you need to create a beautiful space with lasting durability. We even threw in a couple of bonus items to remind you to relax and have fun this summer.



Photo by Beth Singer

This space created by Marianne Jones, showcases *Eastern Promise* by Martyn Lawrence Bullard *Field Majorelle* in Marine/Milk. The aquatic hue and repeating pattern of this concrete tile stirs a wavelike motion and is a sound, easy-to-clean choice for a changing area. **Ann Sacks**

## CLEAN & CLEAR

After a fun-filled day by the water, you'll need a place to store all your things. This assortment of cabinetry is both durable and easy to clean.



Devise a custom solution to keep even the messiest of spaces neat and tidy. These examples will supply ample storage for towels, totes, and even sand pails. **California Closets**



Rain or shine, these cabinetry options feature a rich wood finish that won't warp, fade, or crack, and are available in a variety of finishes. *NatureKast*, **E.W. Kitchens** and *Rutt HandCrafted Cabinetry*, **Gardner Builders**

From left to right: *Cobalt Linen*, **E.W. Kitchens**; *Super White*, **E.W. Kitchens**; *Weathered Driftwood*, **E.W. Kitchens**; *Weathered Charcoal*, **E.W. Kitchens**; *Reclaimed Chestnut Natural Stain*, **Gardner Builders**

## BEVY OF BEAUTIES

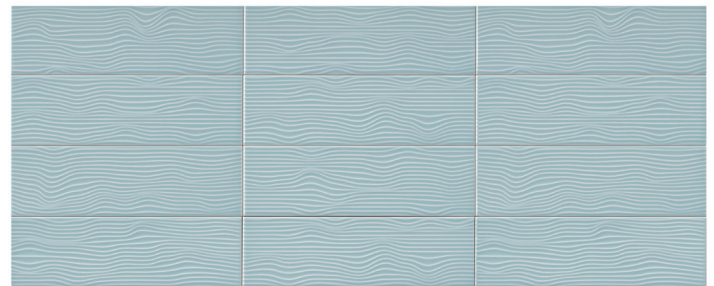
Our showrooms provide an incredible selection of beautiful patterns. Each of these examples are suitable for interior or exterior applications, and are accessible in a potpourri of colors.



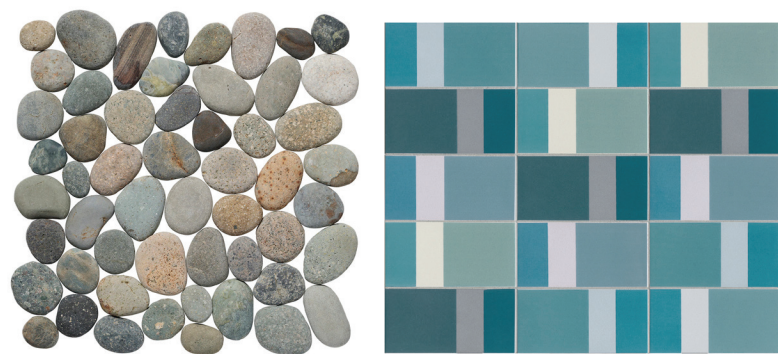
*Island Stone Palms* glass mosaic tile combines a fluid design with geometric elements that are reminiscent of the organic shape of delicate palm fronds. **Beaver Tile & Stone**



*Flash Banana Leaf* in Cotton Gloss indoor/outdoor ceramic tile is an excellent choice when you want to draw upon the inspiration of the tropics without the color commitment. **Ann Sacks**



*Island Stone Nomad Ebb and Flow Sea Foam Gloss* ceramic tile conjures the natural movement of water, creating a soothing backdrop for a wall application. **Beaver Tile & Stone**



**ABOVE LEFT** | Like a collection of your favorite beach finds, *Island Stone Perfect Pebble* natural stone tile in Java Grey Natural are impeccably smooth and uncommonly versatile.

**Beaver Tile & Stone**

**ABOVE RIGHT** | *Diarama Field Series* in Skylight porcelain tile mixes matte and gloss glazes, reflecting the varied tones of the sea. **Ann Sacks**



*Kronos Ceramiche Ske 2.0 Outdoor Wood Side Oak* pictured here in a large-format gres porcelain tile, has an authentic wood finish that's a dead ringer for the real thing. Also available in Wood Side Nut. **Cercan Tile**

## POSH ACCENTS

Every space should have something special that imbues it with character and life. These pillows embody an island spirit and allow you to personalize your environment.

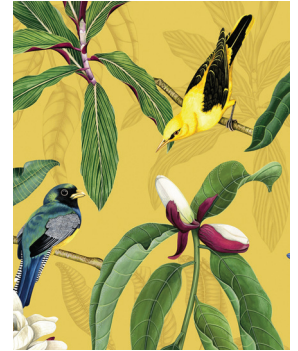
These *Bernhardt Exteriors Accent Pillows* evoke the ethereal essence of billowy clouds and towering sand dunes. **CAI Designs**



This trio of sea-glass-toned *Kravet Soleil* collection indoor/outdoor pillows (pictured left to right) *Inside Out Geo* in Green, *Velvet Lumbar* in Teal, and the *Vista Boucle* in Ink are made to withstand anything the elements throw at them. **Kravet/Lee Jofa/Brunschwig & Fils**

## HEAVY HITTERS

These vibrant textiles may be used for cushions, pillows, or even privacy curtains for your island retreat. Each fabric is water-resistant, and UV treated to prevent fading.



Osborne & Little *Empyrea Michelia* outdoor fabric is offered in three colorways, and illustrates exotic birds perched on magnolia tree branches with white blossoms. **Rozmallin**



Jim Thompson *Cancun* in Lime and *El Bagre* in Sand are inspired by the colors, nature, and crafts of Mexico. **Tennant & Associates**



Pollack Amaya *Mother of Pearl* and *Amaya Surf* indoor/outdoor Sunbrella high-performance fabric has a stain-resistant finish and may be cleaned with bleach. **Tennant & Associates**



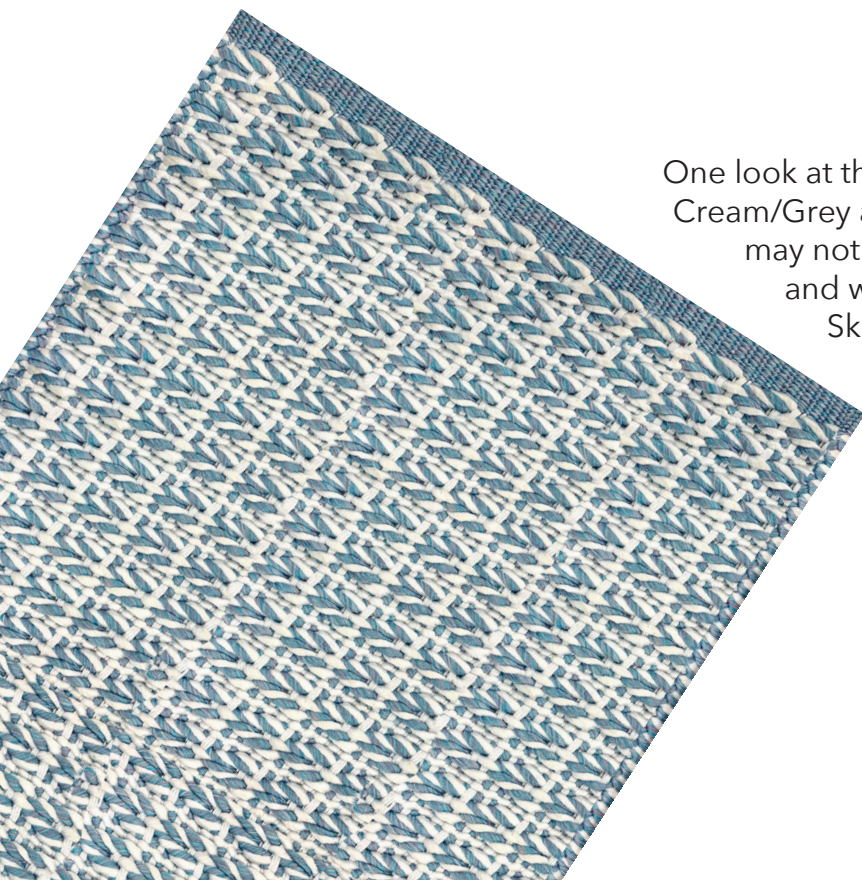
## SAND TRAP

The first line of defense in keeping your home as sand-free as possible is a textured all-weather rug.



The *Dash & Albert Folly* indoor/outdoor rug in Blue/Green (right) has an easy-going vacation attitude with its beach blanket stripes, while the *Veranda* in Natural (above) washes clean with a quick hose down.

**Chatham House Lifestyle Gallery**



One look at the luxuriously soft *Sunbrella* by *Harounian Rugs* Cream/Grey and Cream/Blue outdoor rugs (below) and you may not believe that they can withstand stains or spills, and won't pill or fade. The *Harcourt Collection Aqua Sky* Snow White rug (left) has a sturdy weave that is ready for action. **The Ghiordes Knot**



## SCENE IN A NEW LIGHT

Layers of light set the scene – even outdoors. Below is an array of outdoor solutions which offers a range of illumination to encourage more time outside, right into the wee hours of the night.



The *Savoy House Colonade 6-Light Fan D'Lier* in Provence with gold accents has a secret...a cleverly concealed ceiling fan nestled within. Now that's cool.

**CAI Designs and Lighting Resource Studio**



The *Hubbardton Forge Halo Large* and *Fairwinds Outdoor Sconces* are constructed to resist harsh environmental conditions and combat oxidation to ensure durability for the life of your fixture.

**CAI Designs and Lighting Resource Studio**



Each of these *Visual Comfort* fixtures are a modern take on classic design. From left to right: *Eastham Large Wall Lantern* in Textured Black, *Gracie Single Sconce* in Polished Nickel, *Marine Wall Light* in Chrome, each by Chapman & Myers, and the *Ollie Small Wall Lantern* in Bronze by Ralph Lauren. **City Lights Detroit**

## FOOTLOOSE AND FANCY WHEE!

These furnishings may be used selectively in a mudroom or cabana, but most of all, we hope they will inspire you to unwind and enjoy the island life.



With their appealing nautical hues, the *Uultis Scalene Outdoor Sofa and Chair* pair up for easy conversation.  
**Designer Group Collection**

A sip of wine and a relaxing ride on the *Uultis Gig Outdoor Hanging Chair* at sunset sounds like the perfect way to end the day.  
**Designer Group Collection**



Ideal for small spaces, the *McGuire Outdoor Lounge Chair and Ottoman* by Thomas Pheasant is a lovely and functional piece for a changing area.  
**Baker | McGuire**

# Warmth *in the* Woods

A newly-constructed estate, located on a secluded wooded lot in Oakland County, receives the finishing touch through an extra dose of warmth and luxury.

By Craig Argenti

*Interiors: Rachel Nelson, Concetti  
Photos: Brett Mountain*



This serene sitting area in the primary bedroom is the perfect spot to relax with a good book while soaking in the natural light and surrounding foliage beyond the floor-to-ceiling windows.

Sheer fabric: **Designer Furniture Services + Fabrics.**

“The bones of the home are absolutely gorgeous, and the previous architect even earned multiple awards for his work! For us coming in, it took some creative thinking to design intimate spaces in such a beautiful, grand scale.”

*Rachel Nelson, Concetti*



Learn how Rachel and her team created the ideal gathering space in the living room.



The homeowners, who are successful business owners themselves, were looking for a design partner to complement and expand upon the existing architectural features of their home. Rachel and her team at Detroit-based *Concetti Studio* made their vision a reality by transforming the interiors into a sophisticated, modern extension of the outdoors.

Sofas, swivels, side tables, and ottomans:

**CAI Designs.**

Sofa fabric: **Rozmallin.**

Lumbar pillow fabric: **Tennant & Associates.**

Ottoman fabric: **Schumacher.**



The main living area previously had a sectional that fit the space but lacked functionality. It was very deep and not supportive of the cocktails and conversations that the homeowners desired. Rachel selected new seating and enhanced the fireplace by continuing the stone to the right towards the windows to create a balanced space perfect for conversations with friends. An organic-shaped mirror was installed over the hearth, and pillows were added to the ledge to soften the streamlined stone feature wall.

Swivel chair fabric and decorative mirror:  
**CAI Designs.**



**BEFORE**



Several pieces from Hickory Chair's *Ray Booth Collection* – including the sofa, swivel chairs, and side tables – were chosen not only for their ease of use when entertaining, but the unique metal details that fit into the industrial elements of the home. While the previous sectional blocked the view, the *Shea Swivel Chairs*' smaller visual footprint with see-through backs maximizes the expansive vista. The blue color mimics the infinity pool just outside and the Ikat pattern pulls in the organic elements.





*“The goal was to pick textures that were seen in nature,”* says Nelson. *“During our initial discovery process, our clients’ inspiration images were sunsets over tree-lines and nature-based.”* Concetti chose furnishings that emulated these silhouettes, like the warmth of the colors in the rug. The *Hubbardton Forge* table lamps were a subtle way to pull in nature without being cliché. The ottomans act in a supporting role with non-competing colors and textures that offer additional seating when hosting family and friends.

Table lamps: **CAI Designs** and **Lighting Resource Studio**.

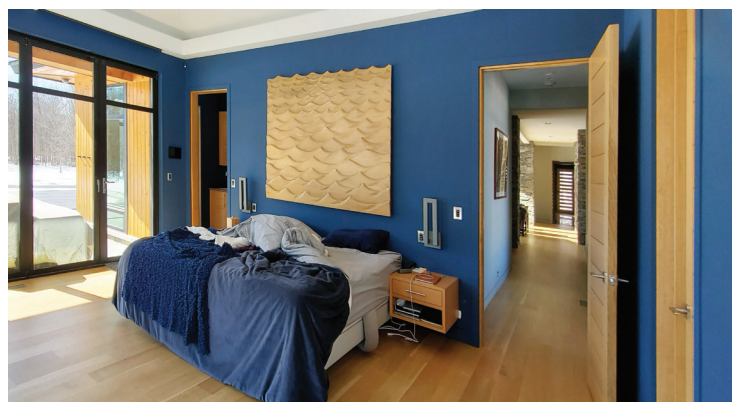
Side table: **CAI Designs**.





Layering was key to adding warmth and personality in the primary bedroom. The tray ceiling was covered in a nubby grasscloth, adding texture on a larger scale along with the headboard's basket-weave pattern. The area rug was also very important in grounding the space. The custom euro pillows in blue-green fabric and the faux fur add yet another natural texture that was not previously used before. Paying homage to the home's wooded lot, the *Hubbardton Forge* pendants that hang over each of the nightstands were chosen for their abstract resemblance of leaves falling.

Ceiling wallcovering and pillow fabric: **Tennant & Associates**.  
 Pendants: **CAI Designs** and **Lighting Resource Studio**.



**BEFORE**



The homeowners had existing automated roller shades for light control, but when they disappear into the ceiling, the windows appeared cold and undressed. Concetti supplemented the window treatments with a unique sheer fabric that doesn't obscure the view and creates the illusion that you are looking through grasses in a field. Greenery was also used to blur the lines between inside and out. Additional seating was added to give the homeowners extra places to relax.

Sheer fabric: **Designer Furniture Services + Fabrics.**

Bench: **CAI Designs.**



“Inspiration for this home was everywhere! The property is surrounded by beautiful colors all year-round. Our challenge was figuring out how to incorporate these natural themes without being too literal.”

*Rachel Nelson, Concetti*



See how Rachel and her team selected materials that mimic the outdoors.



Rachel fell in love with this large format porcelain tile ever since she first saw it at Cercan Tile. Luck would have it that this bathroom, located off the primary bedroom and visible through floor-to-ceiling exterior windows, was the perfect application to make a statement! Previously, the bathroom was just drywall with towel warmers and appeared cold and underwhelming. The large scale is what made this installation successful with sightlines visible from the home's infinity pool. Especially at night, this view is stunning!

Porcelain slab tile: **Cercan Tile.**



“In my firm, we really do set aside our ego and personal likes. It’s all about the discovery process – Who are you? What do you gravitate towards and why? Once we establish chemistry between the client and designer, we can bring our arsenal of design expertise and create a space that truly reflects your personality.”

*Rachel Nelson, Concetti*



---

Watch the full video with Rachel here

---

Stock video footage provided by Motion Places and Videvo | Downloaded from [www.videvo.net](http://www.videvo.net)

# Organic Ambiance

By Tanya Zager Chisholm

No matter the season, weather, or climes, you don't need to forgo the influence of the great outdoors. Connecting your interior design to the native elements outside is known to improve well-being. Choose pieces that reflect organic tones, textures, and materials that will give you a boost and help remind you to take a deep breath and slow down to the rhythm of the natural world.



With lines and texture reminiscent of bark, the hand knotted Tufenkian Bedaya Shale rug is made from soft organic wool that won't rub you the wrong way. **The Ghiordes Knot**

## LIVING ROOM LUXE

This collection of classics in woolly boucle, warm wood tones, buttery leather, steely stone, and cool blue hues create a comfortable space to unwind.



1.



2.



3.



4.



5.



6.



7.



8.



9.

1. McGuire Originals Cardoon Leaf table, **Baker | McGuire**
2. Tempesta throw, **Schumacher**
3. Burdett coffee table, **Kravet/Lee Jofa/Brunschwig & Fils**
4. Hubbardton Forge Brindille table lamp in oil rubbed bronze natural Anna, **CAI Designs** and **Lighting Resource Studio**
5. Lee Industries sofa, **CAI Designs**

6. Verellen Brisbane shelving display, **Chatham House Lifestyle Gallery**
7. Verellen Oakley Sling chair, **Chatham House Lifestyle Gallery**
8. Tufenkian Bedaya charcoal and taupe organic rug, **The Ghiordes Knot**
9. Cabinet, art, throw, pillows, and accessories, **Rita O'Brien Interiors**





Add your favorite bath salts or bubble bath and soak your cares away in the PAPION™ by Kallista Freestanding Bathtub in white and Made Modern Ribbed Triangle ceramic tile in New Bronze Luster.

**Ann Sacks**

Photo Courtesy of Kallista

## BATHING BEAUTIES

Natural materials, colors, and motifs exemplify this collection for the bath to help you design a space to refresh and renew.



1.



2.



3.



4.



5.



6.



7.



8.



9.



10.

1. Kallista One Deck-Mount bath faucet, tall sprout with lever handles, **Ann Sacks**

2. Kallista Fei Tian Wen® by Robert Kuo Elliptical decorative vessel in traditional bronze, **Ann Sacks**

3. Market Collection Vihara eHEX glass tile in Minka, **Beaver Tile & Stone**

4. Jeffrey Court Derby Gallant Mosaic marble tile, **Beaver Tile & Stone**

5. Algarve teak side table, **Rita O'Brien Interiors**

6. Troy Lighting Arlo wall sconce, **CAI Designs** and **Lighting Resource Studio**

7. Mitzi Ariana bath and vanity wall sconce, **CAI Designs** and **Lighting Resource Studio**

8. Pure Marble Foliage Décor Natural porcelain tile, **Cercan Tile**

9. Formalia Collection vanity, towel rail, and mirror, **Scavolini Store Detroit**

10. Pigeon & Poodle Harper bath collection, **Lighting Resource Studio**



The above furry Butterfly stool, Willow Daybed by Paul Meyer, Lago sofa table, and Parma table lamp, each by Verellen, provide a soft and serene place for an afternoon catnap.

**Chatham House Lifestyle Gallery**

Photo Courtesy of Verellen

## BEDROOM BLISS

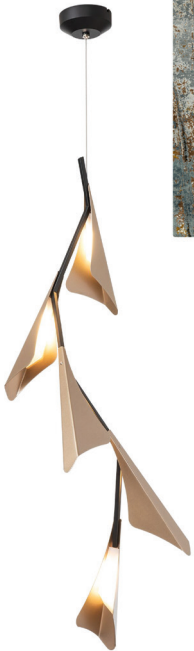
Creating a peaceful sanctuary to retire to at the end of a busy day is essential for good health. Here are a few favorites sure to inspire a good night's rest. Sweet dreams!



1.



2.



3.



4.



5.



6.



7.



8.



9.

1. Tufenkian Luminance Rusty Slate hand-knotted rug, **The Ghiordes Knot**
2. Thomas Pheasant Moderne platform king bed, **Baker | McGuire**
3. Hubbardton Forge Plume 5-Light LED pendant, **CAI Designs** and **Lighting Resource Studio**
4. Lamb Fur Pillow in cream white and natural, **Decoroom**
5. Global Views Wrapped-Handle tray in coral leather, **CAI Designs** and **Decoroom**
6. Verellen Lou stool, **Chatham House Lifestyle Gallery**
7. Boiler & Company B stool, **CAI Designs**
8. Lee Industries Swivel chair, **CAI Designs**
9. Verellen Marcela chair in leather, **Chatham House Lifestyle Gallery**



## Discover the value an interior design professional can bring to your next home project.

They're experts at coordinating all the details to help transform your space. Michigan Design Center offers complimentary Designer Referrals. Call 248.649.4772 for a personalized referral or visit [michigandesign.com](http://michigandesign.com) to see the portfolios of more than 40 designers.

MICHIGAN DESIGN CENTER

45 YEARS AT THE CENTER OF DESIGN

1700 Stutz Drive | Troy, Michigan 48084 | 248.649.4772 | [michigandesign.com](http://michigandesign.com)