

# Warmth *in the* Woods

A newly-constructed estate, located on a secluded wooded lot in Oakland County, receives the finishing touch through an extra dose of warmth and luxury.

By Craig Argenti

*Interiors: Rachel Nelson, Concetti  
Photos: Brett Mountain*



This serene sitting area in the primary bedroom is the perfect spot to relax with a good book while soaking in the natural light and surrounding foliage beyond the floor-to-ceiling windows.

Sheer fabric: **Designer Furniture Services + Fabrics.**



“The bones of the home are absolutely gorgeous, and the previous architect even earned multiple awards for his work! For us coming in, it took some creative thinking to design intimate spaces in such a beautiful, grand scale.”

*Rachel Nelson, Concetti*



Learn how Rachel and her team created the ideal gathering space in the living room.





The homeowners, who are successful business owners themselves, were looking for a design partner to complement and expand upon the existing architectural features of their home. Rachel and her team at Detroit-based *Concetti Studio* made their vision a reality by transforming the interiors into a sophisticated, modern extension of the outdoors.

Sofas, swivels, side tables, and ottomans:

**CAI Designs.**

Sofa fabric: **Rozmallin.**

Lumbar pillow fabric: **Tennant & Associates.**

Ottoman fabric: **Schumacher.**





The main living area previously had a sectional that fit the space but lacked functionality. It was very deep and not supportive of the cocktails and conversations that the homeowners desired. Rachel selected new seating and enhanced the fireplace by continuing the stone to the right towards the windows to create a balanced space perfect for conversations with friends. An organic-shaped mirror was installed over the hearth, and pillows were added to the ledge to soften the streamlined stone feature wall.

Swivel chair fabric and decorative mirror:  
**CAI Designs.**



**BEFORE**





Several pieces from Hickory Chair's *Ray Booth Collection* – including the sofa, swivel chairs, and side tables – were chosen not only for their ease of use when entertaining, but the unique metal details that fit into the industrial elements of the home. While the previous sectional blocked the view, the *Shea Swivel Chairs*' smaller visual footprint with see-through backs maximizes the expansive vista. The blue color mimics the infinity pool just outside and the Ikat pattern pulls in the organic elements.





*“The goal was to pick textures that were seen in nature,”* says Nelson. *“During our initial discovery process, our clients’ inspiration images were sunsets over tree-lines and nature-based.”* Concetti chose furnishings that emulated these silhouettes, like the warmth of the colors in the rug. The *Hubbardton Forge* table lamps were a subtle way to pull in nature without being cliché. The ottomans act in a supporting role with non-competing colors and textures that offer additional seating when hosting family and friends.

Table lamps: **CAI Designs** and **Lighting Resource Studio**.

Side table: **CAI Designs**.

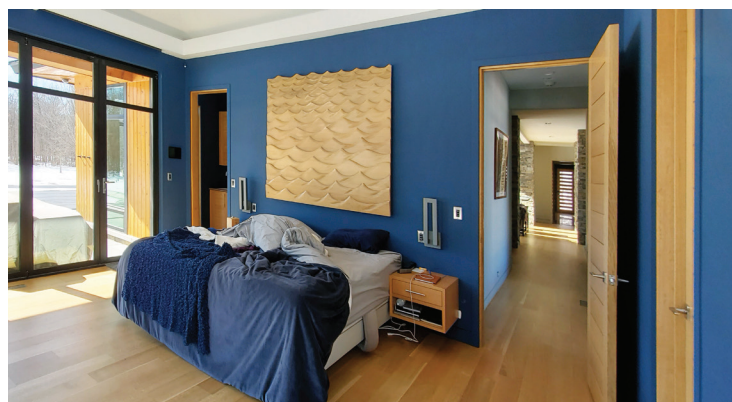






Layering was key to adding warmth and personality in the primary bedroom. The tray ceiling was covered in a nubby grasscloth, adding texture on a larger scale along with the headboard's basket-weave pattern. The area rug was also very important in grounding the space. The custom euro pillows in blue-green fabric and the faux fur add yet another natural texture that was not previously used before. Paying homage to the home's wooded lot, the *Hubbardton Forge* pendants that hang over each of the nightstands were chosen for their abstract resemblance of leaves falling.

Ceiling wallcovering and pillow fabric: **Tennant & Associates**.  
Pendants: **CAI Designs** and **Lighting Resource Studio**.



**BEFORE**





The homeowners had existing automated roller shades for light control, but when they disappear into the ceiling, the windows appeared cold and undressed. Concetti supplemented the window treatments with a unique sheer fabric that doesn't obscure the view and creates the illusion that you are looking through grasses in a field. Greenery was also used to blur the lines between inside and out. Additional seating was added to give the homeowners extra places to relax.

Sheer fabric: **Designer Furniture Services + Fabrics.**  
Bench: **CAI Designs.**





“Inspiration for this home was everywhere! The property is surrounded by beautiful colors all year-round. Our challenge was figuring out how to incorporate these natural themes without being too literal.”

*Rachel Nelson, Concetti*



See how Rachel and her team selected materials that mimic the outdoors.





Rachel fell in love with this large format porcelain tile ever since she first saw it at Cercan Tile. Luck would have it that this bathroom, located off the primary bedroom and visible through floor-to-ceiling exterior windows, was the perfect application to make a statement! Previously, the bathroom was just drywall with towel warmers and appeared cold and underwhelming. The large scale is what made this installation successful with sightlines visible from the home's infinity pool. Especially at night, this view is stunning!

Porcelain slab tile: **Cercan Tile.**





“In my firm, we really do set aside our ego and personal likes. It’s all about the discovery process – Who are you? What do you gravitate towards and why? Once we establish chemistry between the client and designer, we can bring our arsenal of design expertise and create a space that truly reflects your personality.”

*Rachel Nelson, Concetti*



---

Watch the full video with Rachel here

---

Stock video footage provided by Motion Places and Videvo | Downloaded from [www.videvo.net](http://www.videvo.net)



# Organic Ambiance

By Tanya Zager Chisholm

No matter the season, weather, or climes, you don't need to forgo the influence of the great outdoors. Connecting your interior design to the native elements outside is known to improve well-being. Choose pieces that reflect organic tones, textures, and materials that will give you a boost and help remind you to take a deep breath and slow down to the rhythm of the natural world.



With lines and texture reminiscent of bark, the hand knotted Tufenkian Bedaya Shale rug is made from soft organic wool that won't rub you the wrong way. **The Ghiordes Knot**



## LIVING ROOM LUXE

This collection of classics in woolly boucle, warm wood tones, buttery leather, steely stone, and cool blue hues create a comfortable space to unwind.



1.



2.



3.



4.



5.



6.



7.



8.



9.

1. McGuire Originals Cardoon Leaf table, **Baker Furniture**
2. Tempesta throw, **Schumacher**
3. Burdett coffee table, **Kravit/Lee Jofa/Brunschwig & Fils**
4. Hubbardton Forge Brindille table lamp in oil rubbed bronze natural Anna, **CAI Designs** and **Lighting Resource Studio**
5. Lee Industries sofa, **CAI Designs**

6. Verellen Brisbane shelving display, **Chatham House Lifestyle Gallery**
7. Verellen Oakley Sling chair, **Chatham House Lifestyle Gallery**
8. Tufenkian Bedaya charcoal and taupe organic rug, **The Ghiordes Knot**
9. Cabinet, art, throw, pillows, and accessories, **Rita O'Brien Interiors**





Add your favorite bath salts or bubble bath and soak your cares away in the PAPION™ by Kallista Freestanding Bathtub in white and Made Modern Ribbed Triangle ceramic tile in New Bronze Luster.

**Ann Sacks**

Photo Courtesy of Kallista



## BATHING BEAUTIES

Natural materials, colors, and motifs exemplify this collection for the bath to help you design a space to refresh and renew.



1.



2.



3.



4.



5.



6.



7.



8.



9.



10.

1. Kallista One Deck-Mount bath faucet, tall sprout with lever handles, **Ann Sacks**

2. Kallista Fei Tian Wen® by Robert Kuo Elliptical decorative vessel in traditional bronze, **Ann Sacks**

3. Market Collection Vihara eHEX glass tile in Minka, **Beaver Tile & Stone**

4. Jeffrey Court Derby Gallant Mosaic marble tile, **Beaver Tile & Stone**

5. Algarve teak side table, **Rita O'Brien Interiors**

6. Troy Lighting Arlo wall sconce, **CAI Designs** and **Lighting Resource Studio**

7. Mitzi Ariana bath and vanity wall sconce, **CAI Designs** and **Lighting Resource Studio**

8. Pure Marble Foliage Décor Natural porcelain tile, **Cercan Tile**

9. Formalia Collection vanity, towel rail, and mirror, **Scavolini Store Detroit**

10. Pigeon & Poodle Harper bath collection, **Lighting Resource Studio**





The above furry Butterfly stool, Willow Daybed by Paul Meyer, Lago sofa table, and Parma table lamp, each by Verellen, provide a soft and serene place for an afternoon catnap.

**Chatham House Lifestyle Gallery**

Photo Courtesy of Verellen



## BEDROOM BLISS

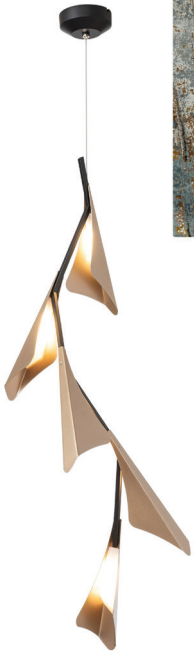
Creating a peaceful sanctuary to retire to at the end of a busy day is essential for good health. Here are a few favorites sure to inspire a good night's rest. Sweet dreams!



1.



2.



3.



4.



5.



6.



7.



8.



9.

1. Tufenkian Luminance Rusty Slate hand-knotted rug, **The Ghiordes Knot**
2. Thomas Pheasant Moderne platform king bed, **Baker Furniture**
3. Hubbardton Forge Plume 5-Light LED pendant, **CAI Designs** and **Lighting Resource Studio**
4. Lamb Fur Pillow in cream white and natural, **Decoroom**

5. Global Views Wrapped-Handle tray in coral leather, **CAI Designs** and **Decoroom**
6. Verellen Lou stool, **Chatham House Lifestyle Gallery**
7. Boiler & Company B stool, **CAI Designs**
8. Lee Industries Swivel chair, **CAI Designs**
9. Verellen Marcela chair in leather, **Chatham House Lifestyle Gallery**