



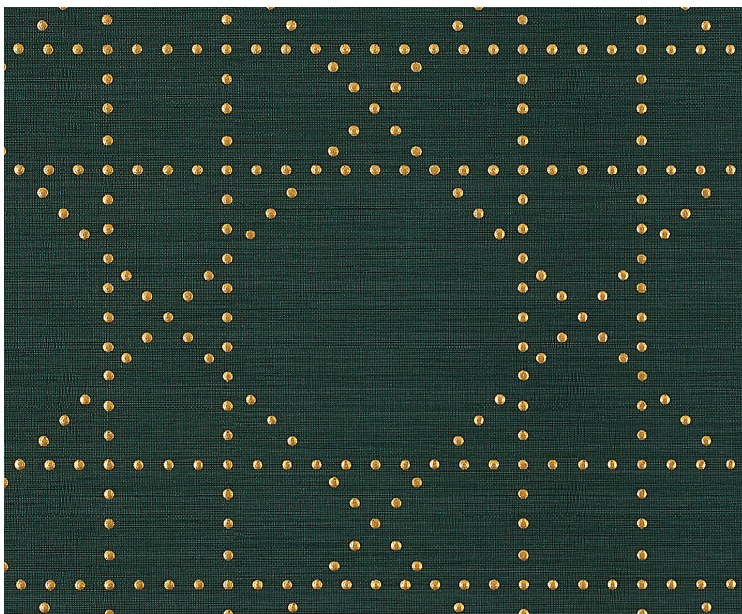
ELEGANT EMERALDS

Reflective surfaces naturally complement the rich shades of color found in jewel tones. Emerald in particular pairs perfectly with mixed metals, such as gold and brass, for a regal look.

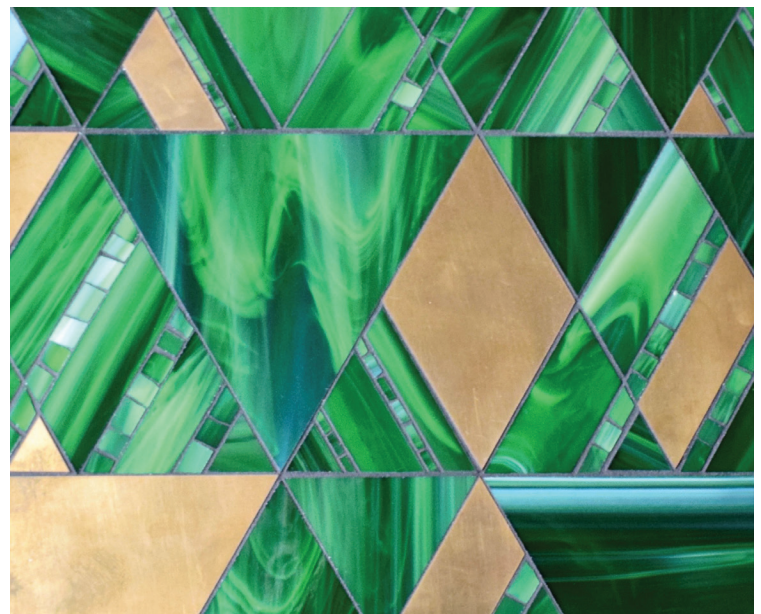


FAR LEFT | A sofa upholstered in *Emerald Lapura Velvet* from GP & J Baker's *Coromandel Collection*. **Kravet | Lee Jofa | Brunschwig & Fils**, Suite 105.

LEFT | The vase-like *Lilou Green Table Lamp* from Currey & Company with an antique brass finish. **CAI Designs**, Suite 82.



Phillip Jeffries' *Styled in Studs Collection* with gold rivets on an emerald vinyl manila hemp backing. **Tennant & Associates**, Suite 61.



Beau Monde Glass pictured here with an Argyle mosaic pattern in bronze and cat's eye in a sea glass finish. **Ann Sacks**, Suite 91.